



**Client:** Cactus Peptides  
**Accession #:** 2606030593  
**Search Code:** Cact2606030593  
**Received:** 06/03/2026  
**Reported:** 06/07/2026  
**Lot:** Light Blue Cap

### Sample Summary

<b>Product:</b>	KLOW 80mg	<b>Purity:</b>	99.77%
<b>Identity:</b>	Confirmed	<b>Net Content:</b>	GHK-Cu – 58.47 mg
<b>Appearance:</b>	Blue Lyophilized Powder		KPV – 9.97 mg
			BPC-157 – 10.89 mg
			Thymosin Beta-4 – 11.34 mg

### Analytical Results

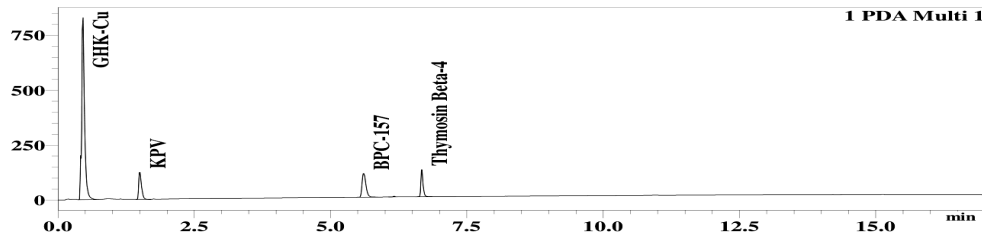
Test	Result
<b>Identity (LC-MS)</b>	GHK-Cu/KPV/Thymosin Beta-4/BPC-157
<b>Purity (HPLC-UV)</b>	99.77%
<b>Net Content</b>	GHK-Cu – 58.47 mg KPV – 9.97 mg BPC-157 – 10.89 mg Thymosin Beta-4 – 11.34 mg

Method: Endotoxin testing performed using Limulus Amebocyte Lysate assay in accordance with USP <85> under validated laboratory conditions.

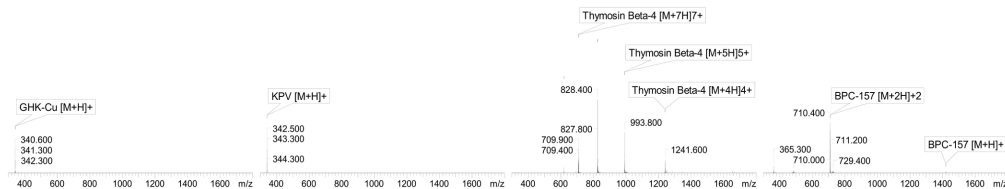
<b>Endotoxin Replicate 1:</b>	Pass	Assay Sensitivity: ≤0.05 EU/mL
<b>Endotoxin Replicate 2:</b>	Pass	Assay Sensitivity: ≤0.05 EU/mL

Method: HPLC with UV detection coupled with mass spectrometry (LC-MS).

#### Chromatogram



#### Mass Confirmation



*Alex Johnson*

Principal Chemist

FreedomDiagnosticsTesting.com  
 Admin@FreedomDiagnostics.net  
**Proudly Owned and Operated in the USA**

