



Client: Peptidologix
Accession #: 2605280085
Search Code: Pept2605280085
Received: 05/28/2026
Reported: 05/30/2026
Lot: KL080-0126

Sample Summary

Product:	KLOW 80mg	Purity:	99.42%
Identity:	Confirmed	Net Content:	GHK-Cu – 45.83 mg
Appearance:	Blue Lyophilized Powder		KPV – 9.53 mg
			BPC-157 – 10.58 mg
			Thymosin Beta-4 – 11.06 mg

Analytical Results

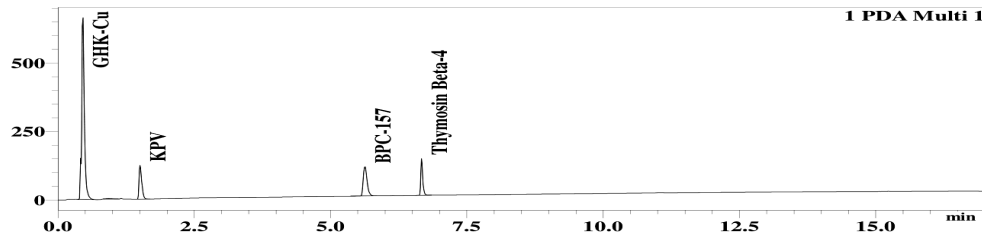
Test	Result
Identity (LC-MS)	GHK-Cu/KPV/Thymosin Beta-4/BPC-157
Purity (HPLC-UV)	99.42%
Net Content	GHK-Cu – 45.83 mg KPV – 9.53 mg BPC-157 – 10.58 mg Thymosin Beta-4 – 11.06 mg

Method: Endotoxin testing performed using Limulus Amebocyte Lysate assay in accordance with USP <85> under validated laboratory conditions.

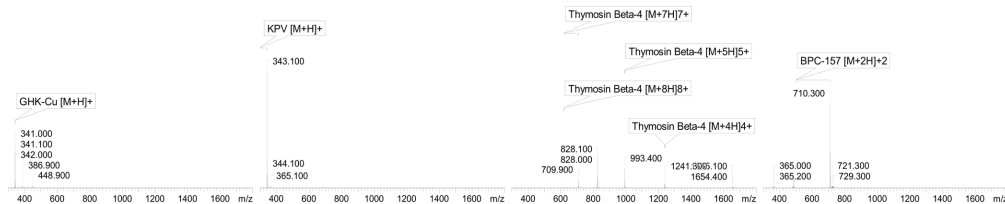
Endotoxin Replicate 1:	Pass	Assay Sensitivity: ≤0.05 EU/mL
Endotoxin Replicate 2:	Pass	Assay Sensitivity: ≤0.05 EU/mL

Method: HPLC with UV detection coupled with mass spectrometry (LC-MS).

Chromatogram



Mass Confirmation



Alex Johnson

Principal Chemist

FreedomDiagnosticsTesting.com
 Admin@FreedomDiagnostics.net
Proudly Owned and Operated in the USA

