



| | |
|---------------------|-----------------|
| Client: | PeptideSource88 |
| Accession #: | 2606240259 |
| Search Code: | Pept2606240259 |
| Received: | 06/24/2026 |
| Reported: | 06/27/2026 |
| Lot: | APBC2026 |

Sample Summary

| | | | |
|--------------------|--------------------------|---------------------|----------|
| Product: | Retatrutide 30mg | Purity: | 99.97% |
| Identity: | Confirmed | Net Content: | 32.56 mg |
| Appearance: | White Lyophilized Powder | | |

Analytical Results

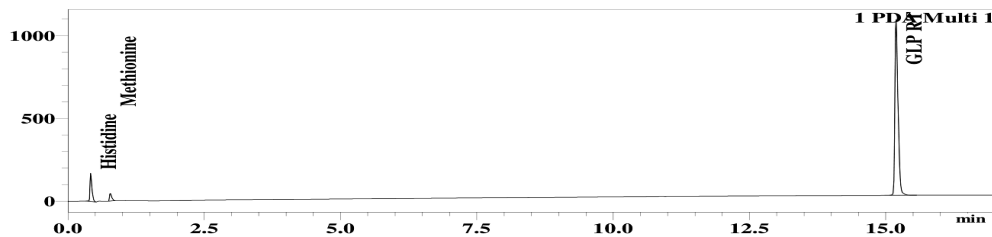
| Test | Result |
|-------------------------|----------|
| Identity (LC-MS) | GLP RT |
| Purity (HPLC-UV) | 99.97% |
| Net Content | 32.56 mg |

Method: Endotoxin testing performed using Limulus Amebocyte Lysate assay in accordance with USP <85> under validated laboratory conditions.

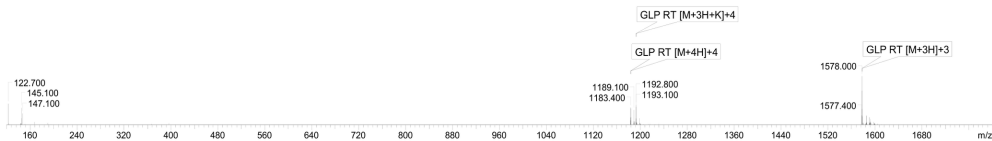
| | | |
|-------------------------------|------|--------------------------------|
| Endotoxin Replicate 1: | Pass | Assay Sensitivity: ≤0.05 EU/mL |
| Endotoxin Replicate 2: | Pass | Assay Sensitivity: ≤0.05 EU/mL |

Method: HPLC with UV detection coupled with mass spectrometry (LC-MS).

Chromatogram



Mass Confirmation




Principal Chemist

FreedomDiagnosticsTesting.com
Admin@FreedomDiagnostics.net

Proudly Owned and Operated in the USA

