



Proudly Owned and Operated in the USA

Searchable via: FreedomDiagnosticsTesting.com

Product	Klow 80mg
Net Peptide Content	Vial 1: GHK-Cu – 54.81 mg KPV – 12.65 mg BPC-157 – 11.45 mg Thymosin Beta-4 – 10.46 mg
	Vial 2: GHK-Cu – 53.18 mg KPV – 12.75 mg BPC-157 – 12.39 mg Thymosin Beta-4 – 10.81 mg
	Vial 3: GHK-Cu – 54.21 mg KPV – 12.52 mg BPC-157 – 11.35 mg Thymosin Beta-4 – 10.38 mg
Average Net Peptide	GHK-Cu – 54.07 mg KPV – 12.64 mg BPC-157 – 11.73 mg Thymosin Beta-4 – 10.55 mg

Certificate of Analysis

Accession Number	2601020064
Client	AMC Essentials
Search Code	AMCE2601020064

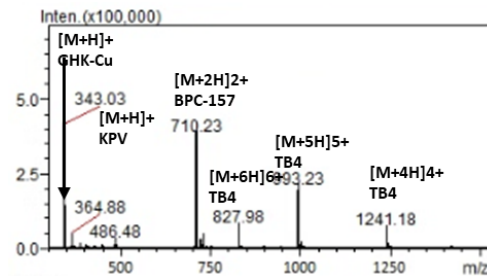
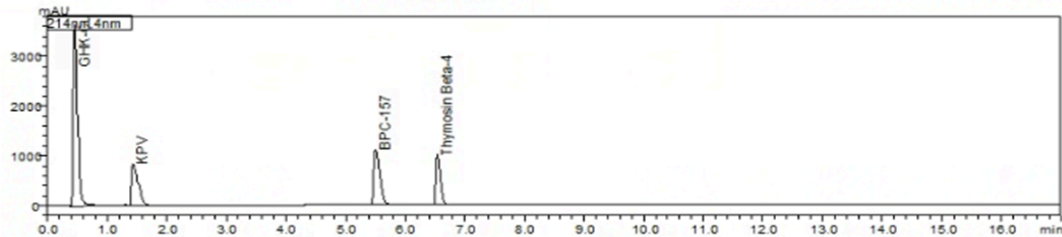
Received Date:	1/02/2026
Reported Date:	1/3/2026

Lot	KL-0002ACF
Purity	Vial 1: 99.774%
	Vial 2: 99.732%
	Vial 3: 99.765%
Appearance	Blue Lyophilized Powder

	Endotoxin Threshold	Result
Replicate 1	≤ 0.05 EU/mL	PASS
Replicate 2	≤ 0.05 EU/mL	PASS

All Chemical Analysis was performed by HPLC with UV Detection Coupled with Mass Spectrometry

Mass Identification	Result
GHK-Cu/KPV/BPC-157/Thymosin Beta-4	99.76%



Stephen Schmidt

Stephen Schmidt
Principal Chemist

COA: 2601020064

The peptide purity analysis reported here was conducted using LCMS/MS under standard laboratory conditions. This analysis is intended for informational purposes only and is specific to the sample(s) provided. The peptides tested are intended for research use only and are not approved for human or veterinary use, diagnostic, therapeutic, or clinical applications. Results should be interpreted by qualified professionals within the scope of the intended research. The accuracy and reliability of the test may be influenced by sample integrity, handling, and other experimental variables.

Searchable via: FreedomDiagnosticsTesting.com

Contact at: Admin@FreedomDiagnostics.net