



Client: Peptide Haus
Accession #: 2606050285
Search Code: Pept2606050285
Received: 06/05/2026
Reported: 06/08/2026
Lot: KL80VLT526

Sample Summary

Product:	KLOW 80mg	Purity:	99.72%
Identity:	Confirmed	Net Content:	GHK-Cu – 50.28 mg KPV – 8.92 mg BPC-157 – 9.30 mg Thymosin Beta-4 – 9.86 mg
Appearance:	Blue Lyophilized Powder		

Analytical Results

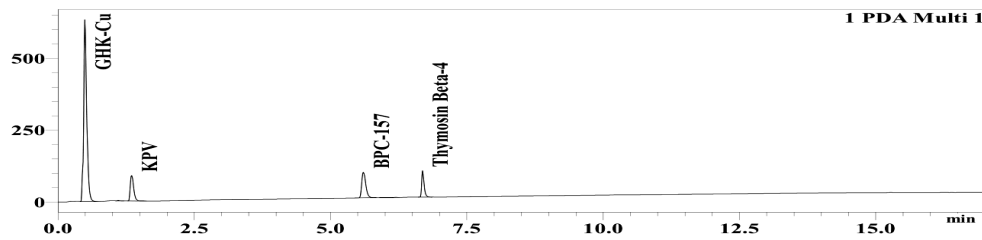
Test	Result
Identity (LC-MS)	GHK-Cu/KPV/Thymosin Beta-4/BPC-157
Purity (HPLC-UV)	99.72%
Net Content	GHK-Cu – 50.28 mg KPV – 8.92 mg BPC-157 – 9.30 mg Thymosin Beta-4 – 9.86 mg

Method: Endotoxin testing performed using Limulus Amebocyte Lysate assay in accordance with USP <85> under validated laboratory conditions.

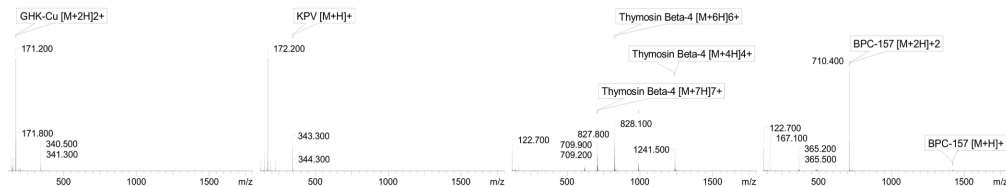
Endotoxin Replicate 1:	Pass	Assay Sensitivity: ≤0.05 EU/mL
Endotoxin Replicate 2:	Pass	Assay Sensitivity: ≤0.05 EU/mL

Method: HPLC with UV detection coupled with mass spectrometry (LC-MS).

Chromatogram



Mass Confirmation



Alex Johnson

Principal Chemist

FreedomDiagnosticsTesting.com
 Admin@FreedomDiagnostics.net
Proudly Owned and Operated in the USA

