



<b>Client:</b>	BIOELEVATE
<b>Accession #:</b>	2606220534
<b>Search Code:</b>	BIOE2606220534
<b>Received:</b>	06/22/2026
<b>Reported:</b>	06/25/2026
<b>Lot:</b>	White Cap

## Sample Summary

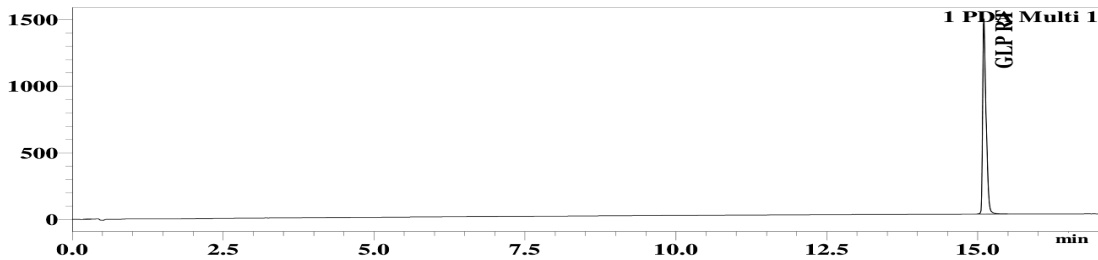
<b>Product:</b>	Retatrutide 20mg	<b>Purity:</b>	99.67%
<b>Identity:</b>	Confirmed	<b>Net Content:</b>	Not Requested
<b>Appearance:</b>	White Lyophilized Powder		

## Analytical Results

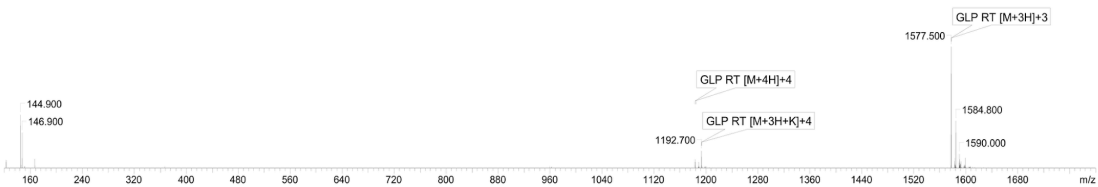
Test	Result
Identity (LC-MS)	GLP RT
Purity (HPLC-UV)	99.67%
Net Content	Not Requested

Method: HPLC with UV detection coupled with mass spectrometry (LC-MS).

### Chromatogram



### Mass Confirmation




Principal Chemist

FreedomDiagnosticsTesting.com

Admin@FreedomDiagnostics.net

Proudly Owned and Operated in the USA



The peptide purity analysis reported here was conducted using LCMS/MS under standard laboratory conditions. This analysis is intended for informational purposes only and is specific to the sample(s) provided. The peptides tested are intended for research use only and are not approved for human or veterinary use, diagnostic, therapeutic, or clinical applications. Results should be interpreted by qualified professionals within the scope of the intended research. The accuracy and reliability of the test may be influenced by sample integrity, handling, and other experimental variables.