



Client:	Baseline Research
Accession #:	2606220884
Search Code:	Base2606220884
Received:	06/22/2026
Reported:	06/25/2026
Lot:	FD-002

Sample Summary

Product:	KLOW80	Purity:	99.63%
Identity:	Confirmed	Net Content:	GHK-Cu – 51.45 mg KPV and Ac-SDKP – 22.00 mg BPC-157 – 11.55 mg
Appearance:	Blue Lyophilized Powder		

Analytical Results

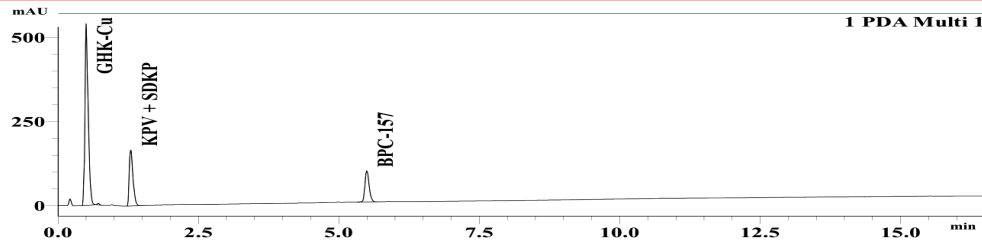
Test	Result
Identity (LC-MS)	GHK-Cu/KPV and Ac-SDKP/BPC-157
Purity (HPLC-UV)	99.63%
Net Content	GHK-Cu – 51.45 mg KPV and Ac-SDKP – 22.00 mg BPC-157 – 11.55 mg

Method: Endotoxin testing performed using Limulus Amebocyte Lysate assay in accordance with USP <85> under validated laboratory conditions.

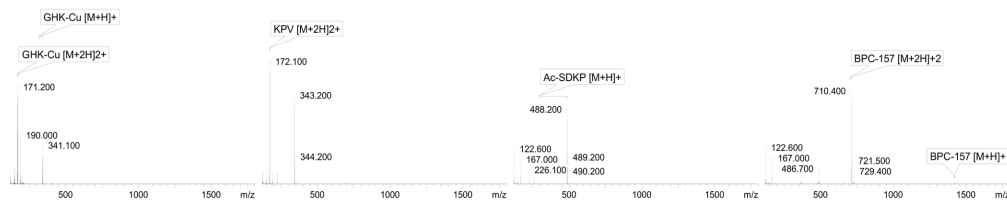
Endotoxin Replicate 1:	Pass	Assay Sensitivity: ≤0.05 EU/mL
Endotoxin Replicate 2:	Pass	Assay Sensitivity: ≤0.05 EU/mL

Method: HPLC with UV detection coupled with mass spectrometry (LC-MS).

Chromatogram



Mass Confirmation



Alex Johnson

Principal Chemist

FreedomDiagnosticsTesting.com
Admin@FreedomDiagnostics.net

Proudly Owned and Operated in the USA

