



Client: RP
Accession #: 2606040274
Search Code: RP2606040274
Received: 06/04/2026
Reported: 06/07/2026
Lot: Pink Cap

Sample Summary

Product:	KLOW 80	Purity:	99.81%
Identity:	Confirmed	Net Content:	GHK-Cu – 48.86 mg
Appearance:	Blue Lyophilized Powder		KPV – 11.13 mg
			TB-500 – 11.26 mg
			BPC-157 – 10.89 mg

Analytical Results

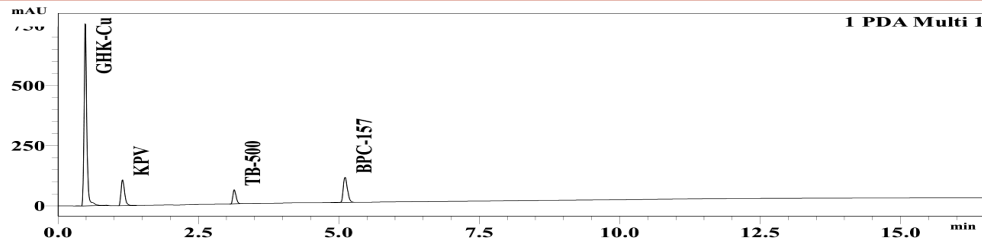
Test	Result
Identity (LC-MS)	GHK-Cu/KPV/TB-500/BPC-157
Purity (HPLC-UV)	99.81%
Net Content	GHK-Cu – 48.86 mg KPV – 11.13 mg TB-500 – 11.26 mg BPC-157 – 10.89 mg

Method: Endotoxin testing performed using Limulus Amebocyte Lysate assay in accordance with USP <85> under validated laboratory conditions.

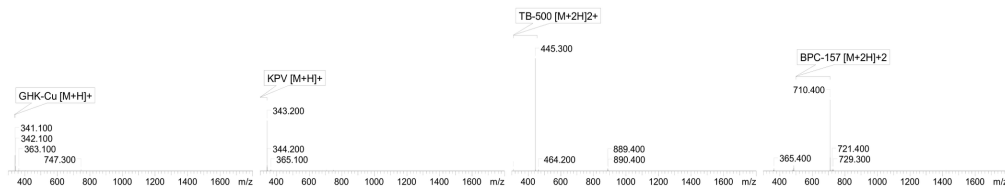
Endotoxin Replicate 1:	Pass	Assay Sensitivity: ≤0.05 EU/mL
Endotoxin Replicate 2:	Pass	Assay Sensitivity: ≤0.05 EU/mL

Method: HPLC with UV detection coupled with mass spectrometry (LC-MS).

Chromatogram



Mass Confirmation



Alex Johnson

Principal Chemist

FreedomDiagnosticsTesting.com
 Admin@FreedomDiagnostics.net
Proudly Owned and Operated in the USA

