

Client: Sigma Compounds
Accession #: 2606030340
Search Code: Sigm2606030340
Received: 06/03/2026
Reported: 06/05/2026
Lot: 1

Sample Summary

| | | | |
|----------------------------------|--------------------------|-------------------------|--------------------------------------|
| Product: | Tirzepatide 20mg | Purity: | Vial 1: 99.84% Vial 2: 99.75% |
| Identity: | Confirmed | Net Content: | Vial 1: 24.70 mg Vial 2: 23.98 mg |
| Appearance: | White Lyophilized Powder | Fentanyl Screen: | Negative |
| Endotoxin Threshold: | Pass | | |
| Microbial Analysis (PCR): | Pass | | |

Analytical Results

| Test | Result |
|----------------------------|----------|
| Identity (LC-MS) | GLP TZ |
| Purity (HPLC-UV) | 99.80% |
| Net Content Average | 24.34 mg |

Method: Endotoxin testing performed using Limulus Amebocyte Lysate assay in accordance with USP <85> under validated laboratory conditions.

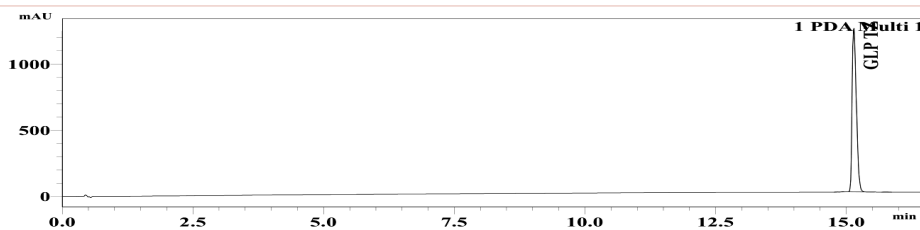
| | | |
|-------------------------------|------|--------------------------------|
| Endotoxin Replicate 1: | Pass | Assay Sensitivity: ≤0.05 EU/mL |
| Endotoxin Replicate 2: | Pass | Assay Sensitivity: ≤0.05 EU/mL |

Method: Microbial detection performed using validated polymerase chain reaction (PCR)-based assay targeting common microbial contaminants.

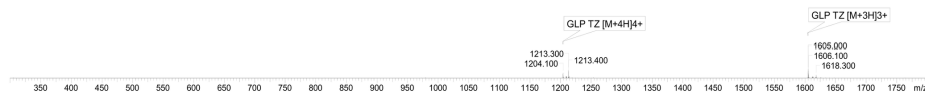
| | | |
|---------------------------------|-----------------------------|------|
| Microbial Analysis (PCR) | No Detectable Microbial DNA | Pass |
|---------------------------------|-----------------------------|------|

Method: HPLC with UV detection coupled with mass spectrometry (LC-MS).

Chromatogram



Mass Confirmation



Alex Johnson

Principal Chemist

FreedomDiagnosticsTesting.com
 Admin@FreedomDiagnostics.net
Proudly Owned and Operated in the USA



The peptide purity analysis reported here was conducted using LCMS/MS under standard laboratory conditions. This analysis is intended for informational purposes only and is specific to the sample(s) provided. The peptides tested are intended for research use only and are not approved for human or veterinary use, diagnostic, therapeutic, or clinical applications. Results should be interpreted by qualified professionals within the scope of the intended research. The accuracy and reliability of the test may be influenced by sample integrity, handling, and other experimental variables.