



<b>Client:</b>	No. 1 Peptide
<b>Accession #:</b>	2605290287
<b>Search Code:</b>	No.12605290287
<b>Received:</b>	05/29/2026
<b>Reported:</b>	06/01/2026
<b>Lot:</b>	4

### Sample Summary

<b>Product:</b>	KLOW	<b>Purity:</b>	99.77%
<b>Identity:</b>	Confirmed	<b>Net Content:</b>	GHK-Cu – 49.18 mg KPV – 8.71 mg BPC-157 – 9.03 mg Thymosin Beta-4 – 9.73 mg
<b>Appearance:</b>	Blue Lyophilized Powder		

### Analytical Results

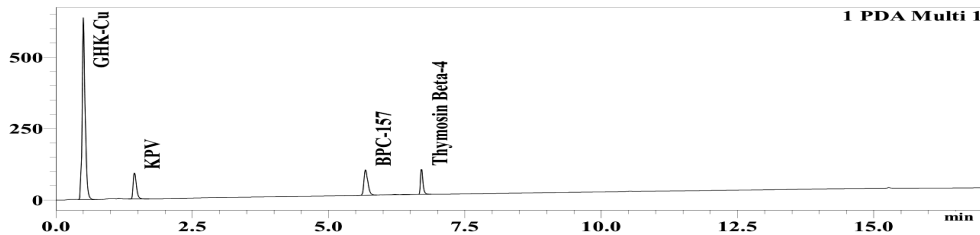
Test	Result
<b>Identity (LC-MS)</b>	GHK-Cu/KPV/Thymosin Beta-4/BPC-157
<b>Purity (HPLC-UV)</b>	99.77%
<b>Net Content</b>	GHK-Cu – 49.18 mg KPV – 8.71 mg BPC-157 – 9.03 mg Thymosin Beta-4 – 9.73 mg

Method: Endotoxin testing performed using Limulus Amebocyte Lysate assay in accordance with USP <85> under validated laboratory conditions.

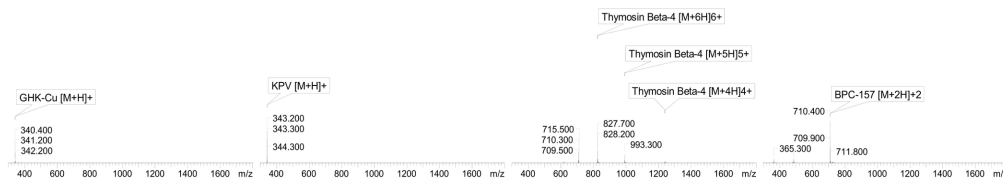
<b>Endotoxin Replicate 1:</b>	Pass	Assay Sensitivity: ≤0.05 EU/mL
<b>Endotoxin Replicate 2:</b>	Pass	Assay Sensitivity: ≤0.05 EU/mL

Method: HPLC with UV detection coupled with mass spectrometry (LC-MS).

#### Chromatogram



#### Mass Confirmation



*Alex Johnson*

Principal Chemist

FreedomDiagnosticsTesting.com  
Admin@FreedomDiagnostics.net  
Proudly Owned and Operated in the USA

