



Client: Pepolution
Accession #: 2604130211
Search Code: Pepo2604130211
Received: 04/13/2026
Reported: 04/14/2026
Lot: Pink Cap

Sample Summary

Product:	Klow Blend	Purity:	Vial 1: 99.83% Vial 2: 99.91%
Identity:	Confirmed	Net Content:	Vial 1: GHK-Cu – 58.57 mg KPV – 10.80 mg BPC-157 – 11.55 mg Thymosin Beta-4 – 10.71 mg
Appearance:	Blue Lyophilized Powder		Vial 2: GHK-Cu – 57.56 mg KPV – 10.59 mg BPC-157 – 10.54 mg Thymosin Beta-4 – 10.56 mg

Analytical Results

Test	Result
Identity (LC-MS)	GHK-Cu/KPV/BPC-157/Thymosin Beta-4
Purity (HPLC-UV)	99.83%
Net Content Average	GHK-Cu – 58.07 mg KPV – 10.70 mg BPC-157 – 11.05 mg Thymosin Beta-4 – 10.64 mg

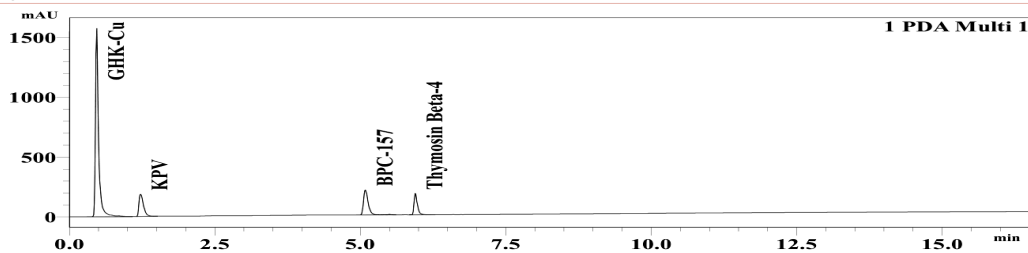
Method: Endotoxin testing performed using Limulus Amebocyte Lysate assay in accordance with USP <85> under validated laboratory conditions.

Endotoxin Replicate 1: Pass Assay Sensitivity: ≤ 0.05 EU/mL

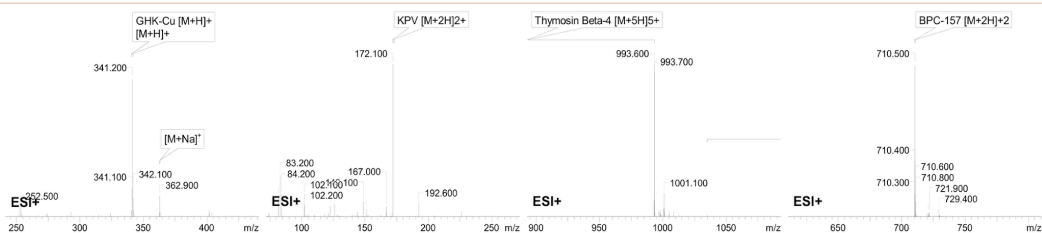
Endotoxin Replicate 2: Pass Assay Sensitivity: ≤ 0.05 EU/mL

Method: HPLC with UV detection coupled with mass spectrometry (LC-MS).

Chromatogram



Mass Confirmation



Alex Johnson

Principal Chemist

FreedomDiagnosticsTesting.com

Admin@FreedomDiagnostics.net

Proudly Owned and Operated in the USA

The peptide purity analysis reported here was conducted using LCMS/MS under standard laboratory conditions. This analysis is intended for informational purposes only and is specific to the sample(s) provided. The peptides tested are intended for research use only and are not approved for human or veterinary use, diagnostic, therapeutic, or clinical applications. Results should be interpreted by qualified professionals within the scope of the intended research. The accuracy and reliability of the test may be influenced by sample integrity, handling, and other experimental variables.