



Proudly Owned and Operated in the USA

Searchable via: [FreedomDiagnosticsTesting.com](http://FreedomDiagnosticsTesting.com)

## Certificate of Analysis

|                  |                |
|------------------|----------------|
| Accession Number | 2511190357     |
| Client           | Lumi Peptides  |
| Search Code      | Lumi2511190357 |

|                |            |
|----------------|------------|
| Received Date: | 11/19/2025 |
| Reported Date: | 11/22/2025 |

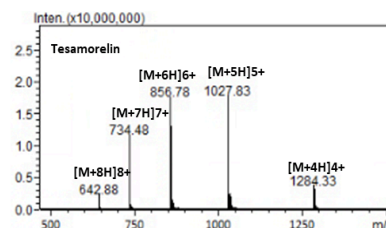
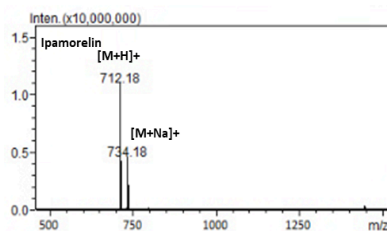
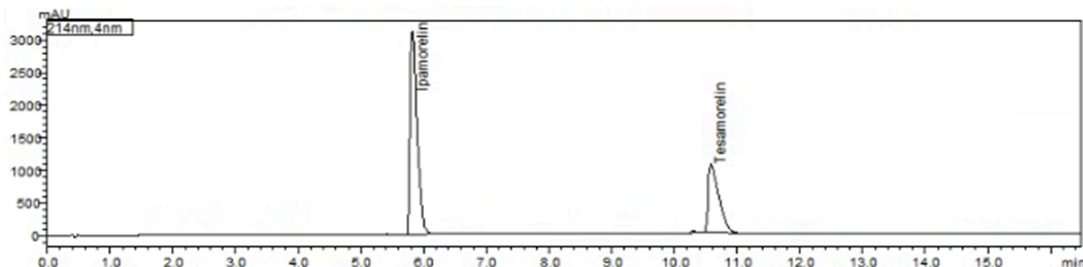
|                            |  |
|----------------------------|--|
| <b>Product</b>             | Tesamorelin/Ipamorelin<br>13/3mg             |
| <b>Net Content Vial 1:</b> | Ipamorelin- 3.77 mg<br>Tesamorelin- 12.83 mg |
| <b>Net Content Vial 2:</b> | Ipamorelin- 3.65 mg<br>Tesamorelin- 13.01 mg |
| <b>Net Content Vial 3:</b> | Ipamorelin- 3.59 mg<br>Tesamorelin- 12.95 mg |
| <b>Average Net Content</b> | Ipamorelin- 3.67 mg<br>Tesamorelin- 12.93 mg |

|                       |                          |
|-----------------------|--------------------------|
| <b>Lot</b>            | LPTI-001                 |
| <b>Purity Vial 1:</b> | 99.441%                  |
| <b>Purity Vial 2:</b> | 99.516%                  |
| <b>Purity Vial 3:</b> | 99.579%                  |
| <b>Appearance</b>     | White Lyophilized Powder |

| Endotoxin Threshold |              | Result |
|---------------------|--------------|--------|
| Replicate 1         | ≤ 0.05 EU/mL | PASS   |
| Replicate 2         | ≤ 0.05 EU/mL | PASS   |

All Chemical Analysis was performed by HPLC with UV Detection Coupled with Mass Spectrometry

| Mass Identification    | Result  |
|------------------------|---------|
| Ipamorelin/Tesamorelin | 99.512% |



*Stephen Schmidt*

COA: 2511190357

Stephen Schmidt  
Principal Chemist

The peptide purity analysis reported here was conducted using LCMS/MS under standard laboratory conditions. This analysis is intended for informational purposes only and is specific to the sample(s) provided. The peptides tested are intended for research use only and are not approved for human or veterinary use, diagnostic, therapeutic, or clinical applications. Results should be interpreted by qualified professionals within the scope of the intended research. The accuracy and reliability of the test may be influenced by sample integrity, handling, and other experimental variables.

Searchable via: [FreedomDiagnosticsTesting.com](http://FreedomDiagnosticsTesting.com)

Contact at: [Admin@FreedomDiagnostics.net](mailto:Admin@FreedomDiagnostics.net)