



Client: Peptira LLC
Accession #: 2604150129
Search Code: Pept2604150129
Received: 04/15/2026
Reported: 04/16/2026
Lot: KLOW80-008

Sample Summary

Product:	KLOW 80mg	Purity:	Vial 1: 99.81% Vial 2: 99.87% Vial 3: 99.81%
Identity:	Confirmed	Net Content:	Vial 1: GHK-Cu – 52.64 mg KPV – 9.98 mg BPC-157 – 9.99 mg Thymosin Beta-4 – 9.97 mg Vial 2: GHK-Cu – 52.90 mg KPV – 10.11 mg BPC-157 – 10.11 mg Thymosin Beta-4 – 10.15 mg Vial 3: GHK-Cu – 53.93 mg KPV – 10.36 mg BPC-157 – 9.75 mg Thymosin Beta-4 – 9.97 mg
Appearance:	Blue Lyophilized Powder		

Analytical Results

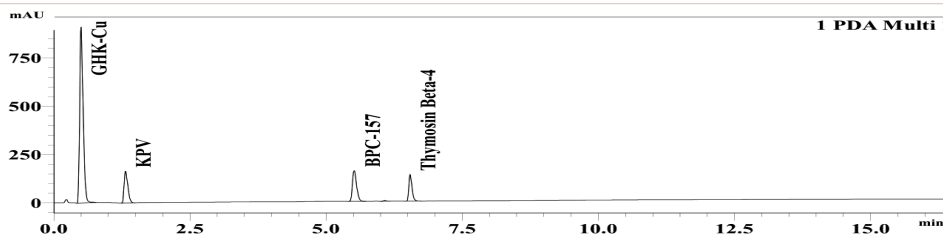
Test	Result
Identity (LC-MS)	GHK-Cu/KPV/BPC-157/Thymosin Beta-4
Purity (HPLC-UV)	99.81%
Net Content Average	GHK-Cu - 53.16 mg KPV - 10.15 mg BPC-157 - 9.95 mg Thymosin Beta-4 - 10.03 mg

Method: Endotoxin testing performed using Limulus Amebocyte Lysate assay in accordance with USP <85> under validated laboratory conditions.

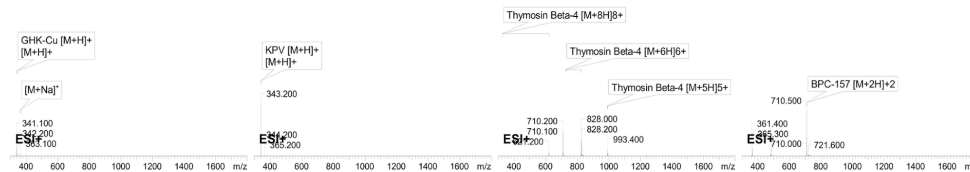
Endotoxin Replicate 1:	Pass	Assay Sensitivity: ≤0.05 EU/mL
Endotoxin Replicate 2:	Pass	Assay Sensitivity: ≤0.05 EU/mL

Method: HPLC with UV detection coupled with mass spectrometry (LC-MS).

Chromatogram



Mass Confirmation



Alex Johnson

Principal Chemist

FreedomDiagnosticsTesting.com

Admin@FreedomDiagnostics.net

Proudly Owned and Operated in the USA

The peptide purity analysis reported here was conducted using LCMS/MS under standard laboratory conditions. This analysis is intended for informational purposes only and is specific to the sample(s) provided. The peptides tested are intended for research use only and are not approved for human or veterinary use, diagnostic, therapeutic, or clinical applications. Results should be interpreted by qualified professionals within the scope of the intended research. The accuracy and reliability of the test may be influenced by sample integrity, handling, and other experimental variables.