



**Client:** PeptaraX Labs  
**Accession #:** 2606040365  
**Search Code:** Pept2606040365  
**Received:** 06/04/2026  
**Reported:** 06/07/2026  
**Lot:** Pink Cap

## Sample Summary

<b>Product:</b>	KLOW 80	<b>Purity:</b>	99.81%
<b>Identity:</b>	Confirmed	<b>Net Content:</b>	GHK-Cu – 48.86 mg
<b>Appearance:</b>	Blue Lyophilized Powder		KPV – 11.13 mg
			TB-500 – 11.26 mg
			BPC-157 – 10.89 mg

## Analytical Results

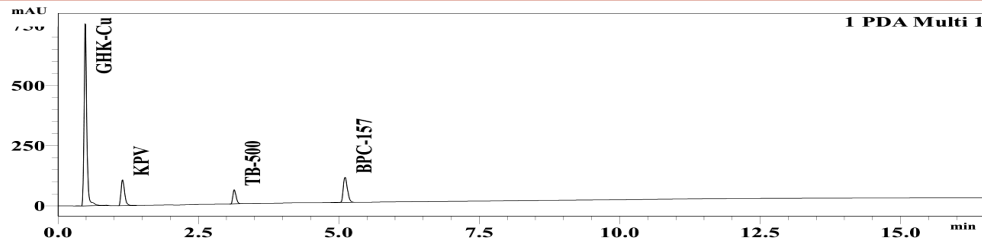
Test	Result
<b>Identity (LC-MS)</b>	GHK-Cu/KPV/TB-500/BPC-157
<b>Purity (HPLC-UV)</b>	99.81%
<b>Net Content</b>	GHK-Cu – 48.86 mg KPV – 11.13 mg TB-500 – 11.26 mg BPC-157 – 10.89 mg

Method: Endotoxin testing performed using Limulus Amebocyte Lysate assay in accordance with USP <85> under validated laboratory conditions.

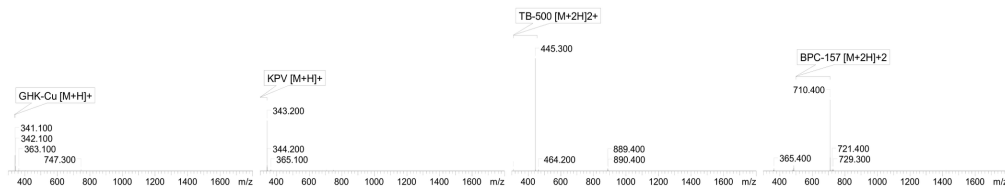
<b>Endotoxin Replicate 1:</b>	Pass	Assay Sensitivity: ≤0.05 EU/mL
<b>Endotoxin Replicate 2:</b>	Pass	Assay Sensitivity: ≤0.05 EU/mL

Method: HPLC with UV detection coupled with mass spectrometry (LC-MS).

### Chromatogram



### Mass Confirmation



*Alex Johnson*

Principal Chemist

FreedomDiagnosticsTesting.com  
 Admin@FreedomDiagnostics.net  
**Proudly Owned and Operated in the USA**

