



**Client:** Planet Peptide  
**Accession #:** 2606090031  
**Search Code:** Plan2606090031  
**Received:** 06/09/2026  
**Reported:** 06/11/2026  
**Lot:** RT30RDBL6526

### Sample Summary

<b>Product:</b>	Retatrutide 30mg	<b>Purity:</b>	99.89%
<b>Identity:</b>	Confirmed	<b>Net Content:</b>	30.65 mg
<b>Appearance:</b>	White Lyophilized Powder		

### Analytical Results

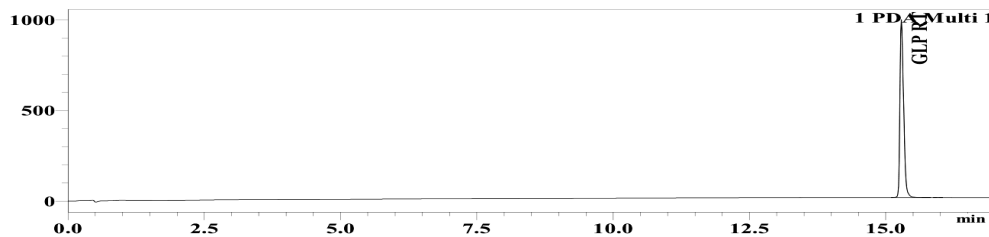
Test	Result
Identity (LC-MS)	GLP RT
Purity (HPLC-UV)	99.89%
Net Content	30.65 mg

Method: Endotoxin testing performed using Limulus Amebocyte Lysate assay in accordance with USP <85> under validated laboratory conditions.

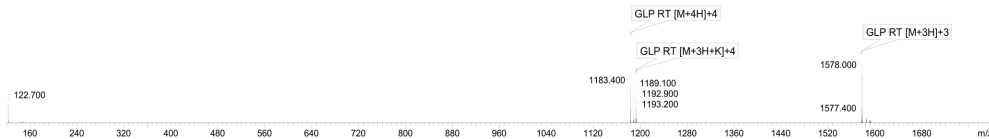
<b>Endotoxin Replicate 1:</b>	Pass	Assay Sensitivity: ≤0.05 EU/mL
<b>Endotoxin Replicate 2:</b>	Pass	Assay Sensitivity: ≤0.05 EU/mL

Method: HPLC with UV detection coupled with mass spectrometry (LC-MS).

#### Chromatogram



#### Mass Confirmation



*Alex Johnson*

Principal Chemist

FreedomDiagnosticsTesting.com  
 Admin@FreedomDiagnostics.net  
**Proudly Owned and Operated in the USA**

