



Client: Forge Amino LLC
Accession #: 2606020367
Search Code: Forg2606020367
Received: 06/02/2026
Reported: 06/04/2026
Lot: FA-KLW062601

Sample Summary

| | | | |
|--------------------|-------------------------|---------------------|--|
| Product: | KLOW 80mg | Purity: | Vial 1: 99.75% Vial 2: 99.81% |
| Identity: | Confirmed | Net Content: | Vial 1: GHK-Cu – 56.34 mg KPV – 9.45 mg BPC-157 – 9.39 mg Thymosin Beta-4 – 9.65 mg |
| Appearance: | Blue Lyophilized Powder | | Vial 2: GHK-Cu – 54.34 mg KPV – 9.67 mg |

Analytical Results

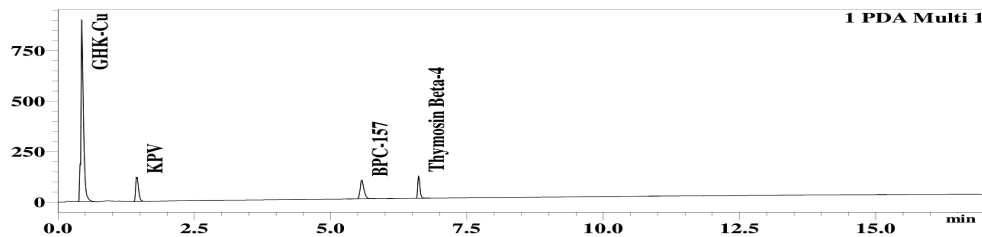
| Test | Result |
|----------------------------|--|
| Identity (LC-MS) | GHK-Cu/KPV/Thymosin Beta-4/BPC-157 |
| Purity (HPLC-UV) | 99.78% |
| Net Content Average | GHK-Cu - 55.34 mg KPV - 9.56 mg Thymosin Beta-4 - 9.65 mg BPC-157 - 9.39 mg |

Method: Endotoxin testing performed using Limulus Amebocyte Lysate assay in accordance with USP <85> under validated laboratory conditions.

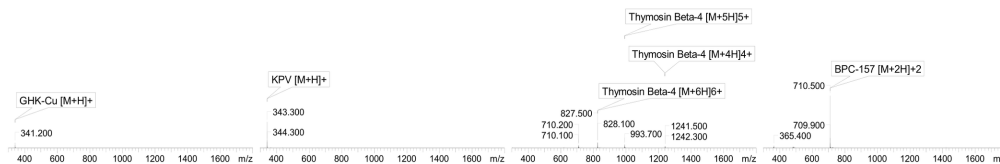
| | | |
|-------------------------------|------|--------------------------------|
| Endotoxin Replicate 1: | Pass | Assay Sensitivity: ≤0.05 EU/mL |
| Endotoxin Replicate 2: | Pass | Assay Sensitivity: ≤0.05 EU/mL |

Method: HPLC with UV detection coupled with mass spectrometry (LC-MS).

Chromatogram



Mass Confirmation



Alex Johnson

Principal Chemist

FreedomDiagnosticsTesting.com
 Admin@FreedomDiagnostics.net
Proudly Owned and Operated in the USA

