

Client:	Peakforce Labs
Accession #:	2605280502
Search Code:	Peak2605280502
Received:	05/28/2026
Reported:	05/30/2026
Lot:	Sami 1225 A

Sample Summary

Product:	SLU PP 332 500mcg	Purity:	99.57%
Identity:	Confirmed	Net Content:	531 mcg
Appearance:	White Capsules		

Analytical Results

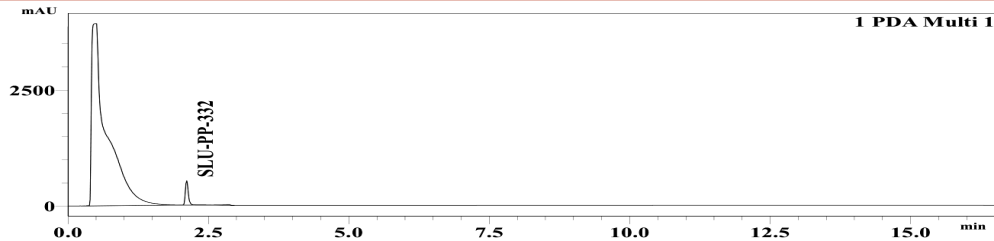
Test	Result
Identity (LC-MS)	SLU-PP-332
Purity (HPLC-UV)	99.57%
Net Content	531 mcg

Method: Endotoxin testing performed using Limulus Amebocyte Lysate assay in accordance with USP <85> under validated laboratory conditions.

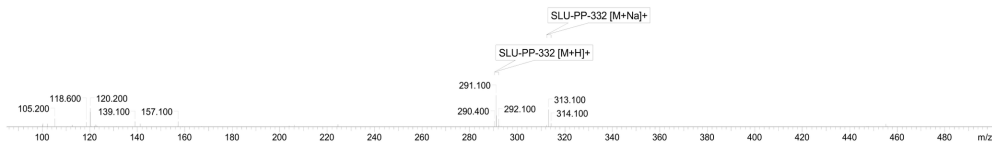
Endotoxin Replicate 1:	Pass	Assay Sensitivity: ≤0.05 EU/mL
Endotoxin Replicate 2:	Pass	Assay Sensitivity: ≤0.05 EU/mL

Method: HPLC with UV detection coupled with mass spectrometry (LC-MS).

Chromatogram



Mass Confirmation




Principal Chemist

FreedomDiagnosticsTesting.com
Admin@FreedomDiagnostics.net
Proudly Owned and Operated in the USA

