



<b>Client:</b>	Protide Health
<b>Accession #:</b>	2606220449
<b>Search Code:</b>	Prot2606220449
<b>Received:</b>	06/22/2026
<b>Reported:</b>	06/24/2026
<b>Lot:</b>	PH-kv101123

### Sample Summary

<b>Product:</b>	KPV 10mg	<b>Purity:</b>	Vial 1: 99.74% Vial 2: 99.73%
<b>Identity:</b>	Confirmed	<b>Net Content:</b>	Vial 1: 11.40 mg Vial 2: 11.28 mg
<b>Appearance:</b>	White Lyophilized Powder		

### Analytical Results

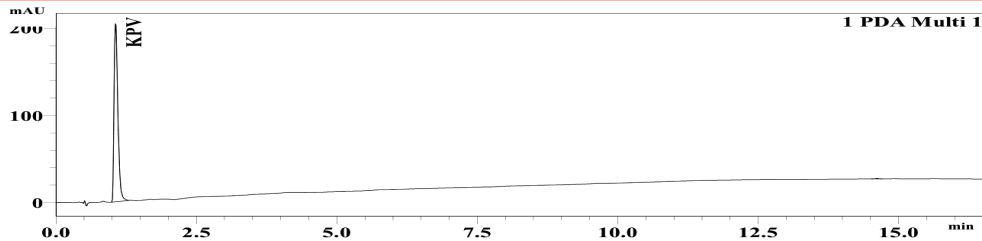
Test	Result
Identity (LC-MS)	KPV
Purity (HPLC-UV)	99.74%
Net Content Average	#ERROR!

Method: Endotoxin testing performed using Limulus Amebocyte Lysate assay in accordance with USP <85> under validated laboratory conditions.

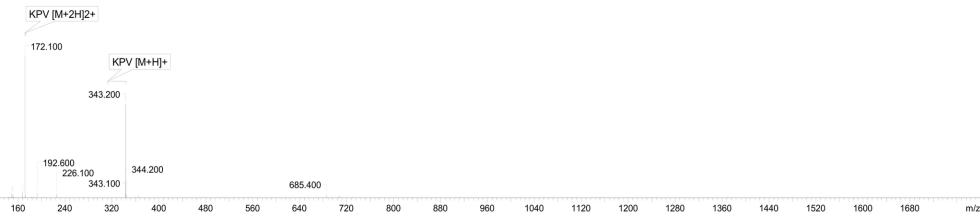
<b>Endotoxin Replicate 1:</b>	Pass	Assay Sensitivity: ≤0.05 EU/mL
<b>Endotoxin Replicate 2:</b>	Pass	Assay Sensitivity: ≤0.05 EU/mL

Method: HPLC with UV detection coupled with mass spectrometry (LC-MS).

#### Chromatogram



#### Mass Confirmation




Principal Chemist

FreedomDiagnosticsTesting.com  
Admin@FreedomDiagnostics.net

Proudly Owned and Operated in the USA

