



Client: Southwest Biologix
Accession #: 2606120623
Search Code: Sout2606120623
Received: 06/12/2026
Reported: 06/15/2026
Lot: GKBT26-55-001

Sample Summary

Product:	KLOW 55mg	Purity:	Vial 1: 99.84% Vial 2: 99.76%
Identity:	Confirmed	Net Content:	Vial 1: GHK-Cu – 32.16 mg KPV – 10.07 mg TB-500 – 11.61 mg BPC-157 – 13.01 mg
Appearance:	Blue Lyophilized Powder		Vial 2: GHK-Cu – 30.16 mg KPV – 10.29 mg

Analytical Results

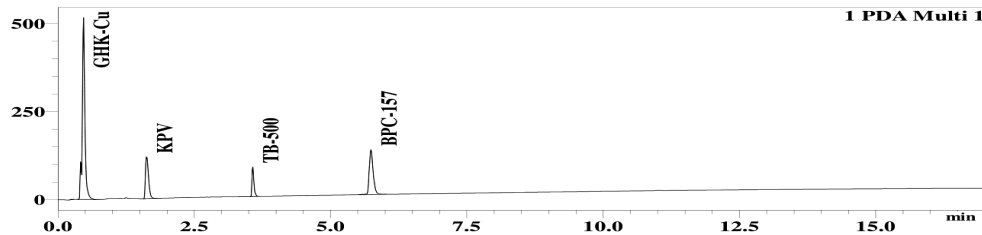
Test	Result
Identity (LC-MS)	GHK-Cu/KPV/TB-500/BPC-157
Purity (HPLC-UV)	99.80%
Net Content Average	GHK-Cu - 31.16 mg KPV - 10.18 mg TB-500 - 11.34 mg BPC-157 - 12.91 mg

Method: Endotoxin testing performed using Limulus Amebocyte Lysate assay in accordance with USP <85> under validated laboratory conditions.

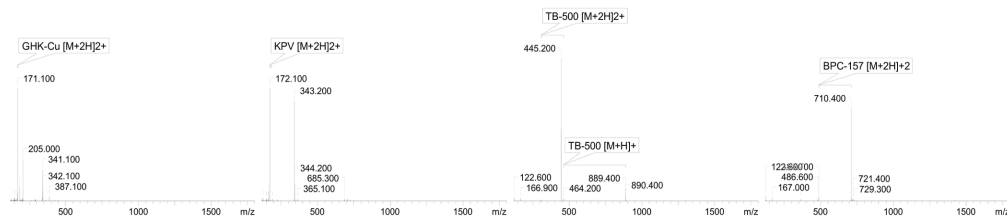
Endotoxin Replicate 1:	Pass	Assay Sensitivity: ≤0.05 EU/mL
Endotoxin Replicate 2:	Pass	Assay Sensitivity: ≤0.05 EU/mL

Method: HPLC with UV detection coupled with mass spectrometry (LC-MS).

Chromatogram



Mass Confirmation



Alex Johnson

Principal Chemist

FreedomDiagnosticsTesting.com
 Admin@FreedomDiagnostics.net
 Proudly Owned and Operated in the US

