



**Client:** Optimal Source LLC  
**Accession #:** 2605220005  
**Search Code:** Opti2605220005  
**Received:** 05/22/2026  
**Reported:** 05/24/2026  
**Lot:** 2080

## Sample Summary

<b>Product:</b>	Retatrutide 20mg	<b>Purity:</b>	99.90%
<b>Identity:</b>	Confirmed	<b>Net Content:</b>	24.60 mg
<b>Appearance:</b>	White Lyophilized Powder		

## Analytical Results

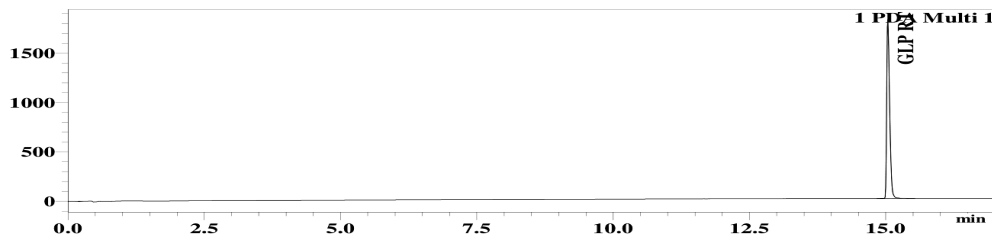
Test	Result
Identity (LC-MS)	GLP RT
Purity (HPLC-UV)	99.90%
Net Content	24.60 mg

Method: Endotoxin testing performed using Limulus Amebocyte Lysate assay in accordance with USP <85> under validated laboratory conditions.

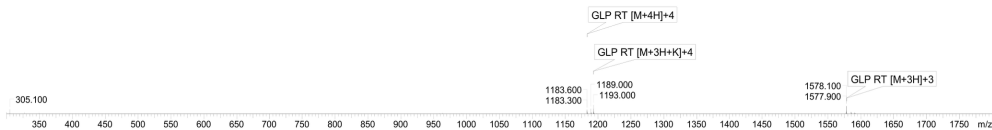
<b>Endotoxin Replicate 1:</b>	Pass	Assay Sensitivity: ≤0.05 EU/mL
<b>Endotoxin Replicate 2:</b>	Pass	Assay Sensitivity: ≤0.05 EU/mL

Method: HPLC with UV detection coupled with mass spectrometry (LC-MS).

### Chromatogram



### Mass Confirmation



*Alex Johnson*

Principal Chemist

FreedomDiagnosticsTesting.com  
Admin@FreedomDiagnostics.net  
Proudly Owned and Operated in the USA

