



Client: Peptaris
Accession #: 2605210390
Search Code: Pept2605210390
Received: 05/21/2026
Reported: 05/23/2026
Lot: 90014

Sample Summary

Product:	KPV/BPC/TB4 10/10/10mg	Purity:	Vial 1: 99.692% Vial 2: 99.709%
Identity:	Confirmed	Net Content:	Vial 1: KPV – 10.77 mg BPC-157 – 12.09 mg Thymosin Beta-4 – 12.13 mg
Appearance:	White Lyophilized Powder		Vial 2: KPV – 10.76 mg BPC-157 – 11.85 mg Thymosin Beta-4 – 11.99 mg
Endotoxin Threshold:	Pass	Fentanyl Screen:	Negative
Microbial Analysis (PCR):	Pass		

Analytical Results

Test	Result
Identity (LC-MS)	Confirmed
Purity (HPLC-UV)	99.70%
Net Content	KPV – 10.77 mg BPC-157 – 11.97 mg Thymosin Beta-4 – 12.06 mg

Method: Endotoxin testing performed using Limulus Amebocyte Lysate assay in accordance with USP <85> under validated laboratory conditions.

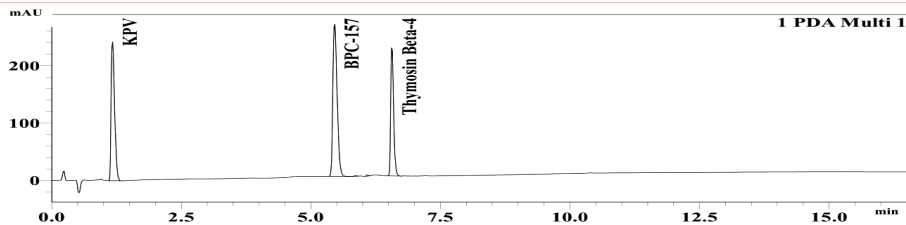
Endotoxin Replicate 1:	Pass	Assay Sensitivity: ≤0.05 EU/mL
Endotoxin Replicate 2:	Pass	Assay Sensitivity: ≤0.05 EU/mL

Method: Microbial detection performed using validated polymerase chain reaction (PCR)-based assay targeting common microbial contaminants.

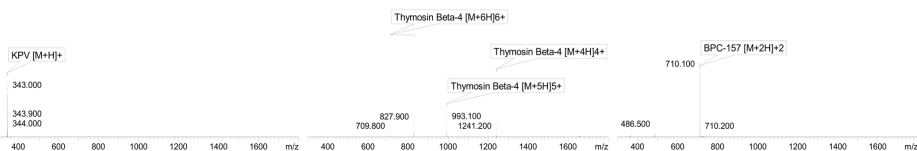
Microbial Analysis (PCR)	No Detectable Microbial DNA	Pass
---------------------------------	-----------------------------	------

Method: HPLC with UV detection coupled with mass spectrometry (LC-MS).

Chromatogram



Mass Confirmation



Alex Johnson

Principal Chemist

FreedomDiagnosticsTesting.com
 Admin@FreedomDiagnostics.net
Proudly Owned and Operated in the USA



The peptide purity analysis reported here was conducted using LCMS/MS under standard laboratory conditions. This analysis is intended for informational purposes only and is specific to the sample(s) provided. The peptides tested are intended for research use only and are not approved for human or veterinary use, diagnostic, therapeutic, or clinical applications. Results should be interpreted by qualified professionals within the scope of the intended research. The accuracy and reliability of the test may be influenced by sample integrity, handling, and other experimental variables.