



Client: CRC
Accession #: 2605220033
Search Code: CRC2605220033
Received: 05/22/2026
Reported: 05/24/2026
Lot: Blue Cap

Sample Summary

Product:	KLOW 80mg	Purity:	Vial 1: 99.65%
Identity:	Confirmed		Vial 2: 99.641%
Appearance:	Blue Lyophilized Powder		Vial 3: 99.637%
Endotoxin Threshold:	Pass	Net Content:	Vial 1: GHK-Cu – 46.79 mg KPV – 9.77 mg BPC-157 – 12.34 mg Thymosin Beta-4 – 10.90 mg
Microbial Analysis (PCR):	Pass		Vial 2: GHK-Cu – 46.25 mg KPV – 9.20 mg BPC-157 – 11.63 mg Thymosin Beta-4 – 10.27 mg
			Vial 3: GHK-Cu – 49.52 mg KPV – 9.10 mg BPC-157 – 11.48 mg Thymosin Beta-4 – 10.13 mg

Analytical Results

Test	Result
Identity (LC-MS)	Confirmed
Purity (HPLC-UV)	99.64%
Net Content	GHK-Cu – 47.52 mg KPV – 9.36 mg BPC-157 – 11.82 mg Thymosin Beta-4 – 10.43 mg

Method: Endotoxin testing performed using Limulus Amebocyte Lysate assay in accordance with USP <85> under validated laboratory conditions.

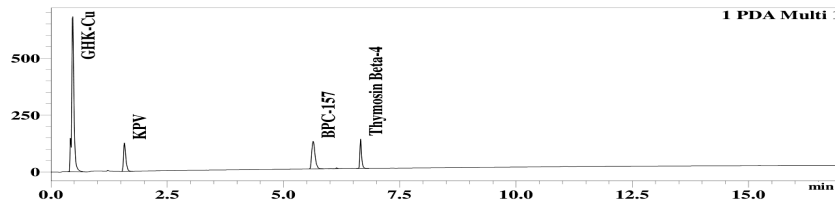
Endotoxin Replicate 1:	Pass	Assay Sensitivity: ≤0.05 EU/mL
Endotoxin Replicate 2:	Pass	Assay Sensitivity: ≤0.05 EU/mL

Method: Microbial detection performed using validated polymerase chain reaction (PCR)-based assay targeting common microbial contaminants.

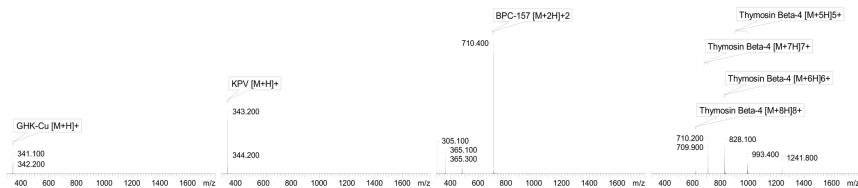
Microbial Analysis (PCR)	No Detectable Microbial DNA	Pass
---------------------------------	-----------------------------	------

Method: HPLC with UV detection coupled with mass spectrometry (LC-MS).

Chromatogram



Mass Confirmation



Alex Johnson
Principal Chemist

FreedomDiagnosticsTesting.com
Admin@FreedomDiagnostics.net
Proudly Owned and Operated in the USA



The peptide purity analysis reported here was conducted using LCMS/MS under standard laboratory conditions. This analysis is intended for informational purposes only and is specific to the sample(s) provided. The peptides tested are intended for research use only and are not approved for human or veterinary use, diagnostic, therapeutic, or clinical applications. Results should be interpreted by qualified professionals within the scope of the intended research. The accuracy and reliability of the test may be influenced by sample integrity, handling, and other experimental variables.