



<b>Client:</b>	Simple Peptide
<b>Accession #:</b>	2605220302
<b>Search Code:</b>	Simp2605220302
<b>Received:</b>	05/22/2026
<b>Reported:</b>	05/24/2026
<b>Lot:</b>	SLU20-052026-1

### Sample Summary

<b>Product:</b>	SLU-PP-332 20mg	<b>Purity:</b>	99.99%
<b>Identity:</b>	Confirmed	<b>Net Content:</b>	24.06 mg
<b>Appearance:</b>	White Capsules		

### Analytical Results

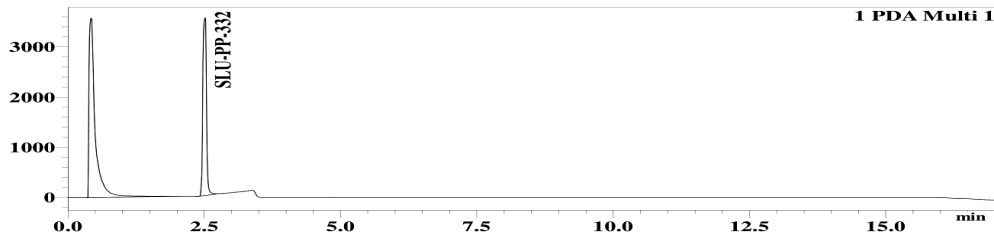
Test	Result
<b>Identity (LC-MS)</b>	SLU-PP-332
<b>Purity (HPLC-UV)</b>	99.99%
<b>Net Content</b>	24.06 mg

Method: Endotoxin testing performed using Limulus Amebocyte Lysate assay in accordance with USP <85> under validated laboratory conditions.

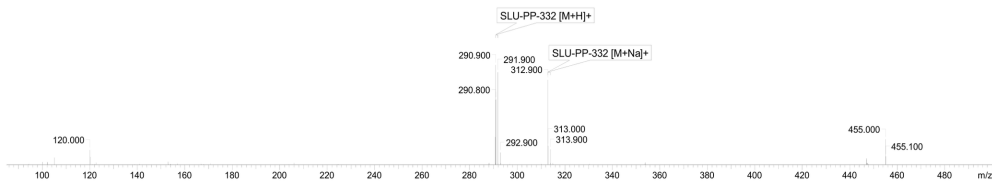
<b>Endotoxin Replicate 1:</b>	Pass	Assay Sensitivity: $\leq 0.05$ EU/mL
<b>Endotoxin Replicate 2:</b>	Pass	Assay Sensitivity: $\leq 0.05$ EU/mL

Method: HPLC with UV detection coupled with mass spectrometry (LC-MS).

#### Chromatogram



#### Mass Confirmation




Principal Chemist

FreedomDiagnosticsTesting.com  
Admin@FreedomDiagnostics.net  
**Proudly Owned and Operated in the USA**

