



<b>Client:</b>	Novaglo Research
<b>Accession #:</b>	2606040133
<b>Search Code:</b>	Nova2606040133
<b>Received:</b>	06/04/2026
<b>Reported:</b>	06/07/2026
<b>Lot:</b>	25060126SE

### Sample Summary

<b>Product:</b>	GLP-1 SE	<b>Purity:</b>	Vial 1: 99.36% Vial 2: 99.40% Vial 3: 99.33% Vial 4: 99.39% Vial 5: 99.46%
<b>Identity:</b>	Confirmed	<b>Net Content:</b>	Vial 1: 11.84 mg Vial 2: 12.50 mg Vial 3: 11.42 mg Vial 4: 11.32 mg Vial 5: 12.39 mg
<b>Appearance:</b>	White Lyophilized Powder		
<b>Endotoxin Threshold:</b>	Pass		
<b>Microbial Analysis (PCR):</b>	Pass		
<b>Fentanyl Screen:</b>	Negative		

### Analytical Results

Test	Result
<b>Identity (LC-MS)</b>	GLP SM
<b>Purity (HPLC-UV)</b>	99.39%
<b>Net Content Average</b>	11.89 mg

Method: Endotoxin testing performed using Limulus Amebocyte Lysate assay in accordance with USP <85> under validated laboratory conditions.

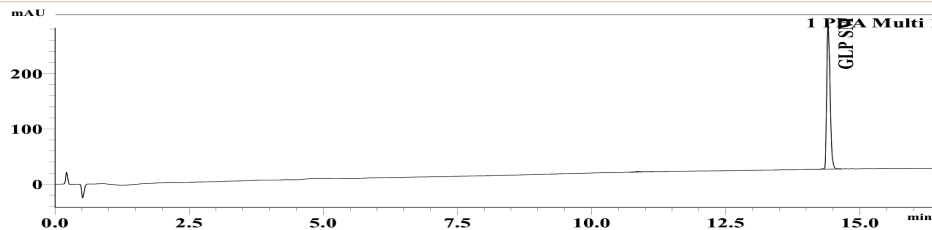
<b>Endotoxin Replicate 1:</b>	Pass	Assay Sensitivity: ≤0.05 EU/mL
<b>Endotoxin Replicate 2:</b>	Pass	Assay Sensitivity: ≤0.05 EU/mL

Method: Microbial detection performed using validated polymerase chain reaction (PCR)-based assay targeting common microbial contaminants.

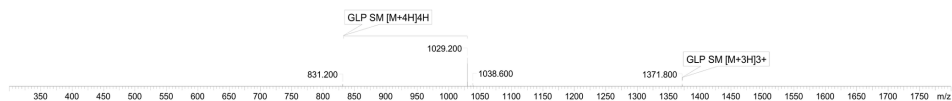
<b>Microbial Analysis (PCR)</b>	No Detectable Microbial DNA	Pass
---------------------------------	-----------------------------	------

Method: HPLC with UV detection coupled with mass spectrometry (LC-MS).

#### Chromatogram



#### Mass Confirmation



*Alex Johnson*

Principal Chemist

FreedomDiagnosticsTesting.com  
Admin@FreedomDiagnostics.net  
Proudly Owned and Operated in the USA



The peptide purity analysis reported here was conducted using LCMS/MS under standard laboratory conditions. This analysis is intended for informational purposes only and is specific to the sample(s) provided. The peptides tested are intended for research use only and are not approved for human or veterinary use, diagnostic, therapeutic, or clinical applications. Results should be interpreted by qualified professionals within the scope of the intended research. The accuracy and reliability of the test may be influenced by sample integrity, handling, and other experimental variables.